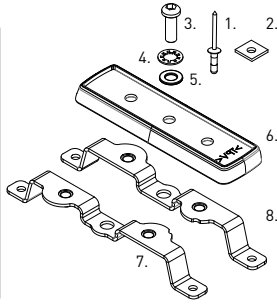


# RHINO-RACK®

QMFK09

**\*Note:** RLT600 Parts as separate.

- Mark hole points through each bracket.
- Centre punch marked hole positions
- Drill Ø5mm holes.
- Vacuum swarf and clean after drilling.
- Apply Cold Galvanising paint to holes
- Apply Butyl patches concentric with each drilled hole.
- Locate the rivets through each bracket into drilled holes. Set all rivets.
- Fasten RLT600 base as per instructions.



Item	Component Name	Qty
1	Stavex Rivet BS 11 4.8mm	4
2	Butyl Patch	4
3	M8 x 12mm Button Head Screw	2
4	M8 Shake Proof Washer	2
5	M8 x 17mm Flat Washer	2
6	RLT600 High Skirt	2
7	Quick Mount Bracket RH Front	1
8	Quick Mount Bracket LH Front	1
9	Instructions	1

Please refer to 'Fit My Vehicle' on the Rhino-Rack web site for comprehensive instructions on fitting racks to your vehicle.

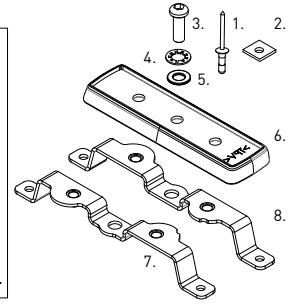
Issue: 03  
Document No: R1006  
Issue Date: 22/2/22

# RHINO-RACK®

QMFK09

**\*Note:** RLT600 Parts as separate.

- Mark hole points through each bracket.
- Centre punch marked hole positions
- Drill Ø5mm holes.
- Vacuum swarf and clean after drilling.
- Apply Cold Galvanising paint to holes
- Apply Butyl patches concentric with each drilled hole.
- Locate the rivets through each bracket into drilled holes. Set all rivets.
- Fasten RLT600 base as per instructions.



Item	Component Name	Qty
1	Stavex Rivet BS 11 4.8mm	4
2	Butyl Patch	4
3	M8 x 12mm Button Head Screw	2
4	M8 Shake Proof Washer	2
5	M8 x 17mm Flat Washer	2
6	RLT600 High Skirt	2
7	Quick Mount Bracket RH Front	1
8	Quick Mount Bracket LH Front	1
9	Instructions	1

Please refer to 'Fit My Vehicle' on the Rhino-Rack web site for comprehensive instructions on fitting racks to your vehicle.

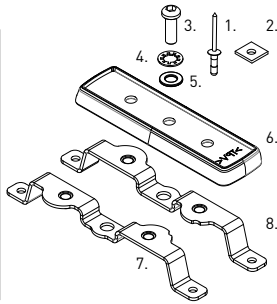
Issue: 03  
Document No: R1006  
Issue Date: 22/2/22

# RHINO-RACK®

QMFK09

**\*Note:** RLT600 Parts as separate.

- Mark hole points through each bracket.
- Centre punch marked hole positions
- Drill Ø5mm holes.
- Vacuum swarf and clean after drilling.
- Apply Cold Galvanising paint to holes
- Apply Butyl patches concentric with each drilled hole.
- Locate the rivets through each bracket into drilled holes. Set all rivets.
- Fasten RLT600 base as per instructions.



Item	Component Name	Qty
1	Stavex Rivet BS 11 4.8mm	4
2	Butyl Patch	4
3	M8 x 12mm Button Head Screw	2
4	M8 Shake Proof Washer	2
5	M8 x 17mm Flat Washer	2
6	RLT600 High Skirt	2
7	Quick Mount Bracket RH Front	1
8	Quick Mount Bracket LH Front	1
9	Instructions	1

Please refer to 'Fit My Vehicle' on the Rhino-Rack web site for comprehensive instructions on fitting racks to your vehicle.

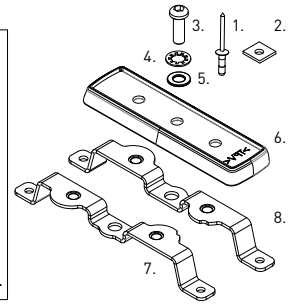
Issue: 03  
Document No: R1006  
Issue Date: 22/2/22

# RHINO-RACK®

QMFK09

**\*Note:** RLT600 Parts as separate.

- Mark hole points through each bracket.
- Centre punch marked hole positions
- Drill Ø5mm holes.
- Vacuum swarf and clean after drilling.
- Apply Cold Galvanising paint to holes
- Apply Butyl patches concentric with each drilled hole.
- Locate the rivets through each bracket into drilled holes. Set all rivets.
- Fasten RLT600 base as per instructions.



Item	Component Name	Qty
1	Stavex Rivet BS 11 4.8mm	4
2	Butyl Patch	4
3	M8 x 12mm Button Head Screw	2
4	M8 Shake Proof Washer	2
5	M8 x 17mm Flat Washer	2
6	RLT600 High Skirt	2
7	Quick Mount Bracket RH Front	1
8	Quick Mount Bracket LH Front	1
9	Instructions	1

Please refer to 'Fit My Vehicle' on the Rhino-Rack web site for comprehensive instructions on fitting racks to your vehicle.

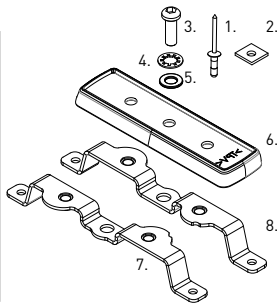
Issue: 03  
Document No: R1006  
Issue Date: 22/2/22

# RHINO-RACK®

QMFK09

**\*Note:** RLT600 Parts as separate.

- Mark hole points through each bracket.
- Centre punch marked hole positions
- Drill Ø5mm holes.
- Vacuum swarf and clean after drilling.
- Apply Cold Galvanising paint to holes
- Apply Butyl patches concentric with each drilled hole.
- Locate the rivets through each bracket into drilled holes. Set all rivets.
- Fasten RLT600 base as per instructions.



Item	Component Name	Qty
1	Stavex Rivet BS 11 4.8mm	4
2	Butyl Patch	4
3	M8 x 12mm Button Head Screw	2
4	M8 Shake Proof Washer	2
5	M8 x 17mm Flat Washer	2
6	RLT600 High Skirt	2
7	Quick Mount Bracket RH Front	1
8	Quick Mount Bracket LH Front	1
9	Instructions	1

Please refer to 'Fit My Vehicle' on the Rhino-Rack web site for comprehensive instructions on fitting racks to your vehicle.

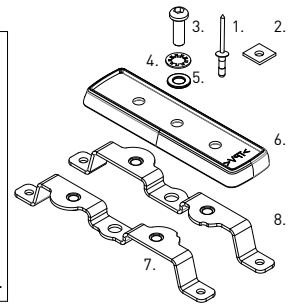
Issue: 03  
Document No: R1006  
Issue Date: 22/2/22

# RHINO-RACK®

QMFK09

**\*Note:** RLT600 Parts as separate.

- Mark hole points through each bracket.
- Centre punch marked hole positions
- Drill Ø5mm holes.
- Vacuum swarf and clean after drilling.
- Apply Cold Galvanising paint to holes
- Apply Butyl patches concentric with each drilled hole.
- Locate the rivets through each bracket into drilled holes. Set all rivets.
- Fasten RLT600 base as per instructions.



Item	Component Name	Qty
1	Stavex Rivet BS 11 4.8mm	4
2	Butyl Patch	4
3	M8 x 12mm Button Head Screw	2
4	M8 Shake Proof Washer	2
5	M8 x 17mm Flat Washer	2
6	RLT600 High Skirt	2
7	Quick Mount Bracket RH Front	1
8	Quick Mount Bracket LH Front	1
9	Instructions	1

Please refer to 'Fit My Vehicle' on the Rhino-Rack web site for comprehensive instructions on fitting racks to your vehicle.

Issue: 03  
Document No: R1006  
Issue Date: 22/2/22