




RHINO-RACK

QMHD10

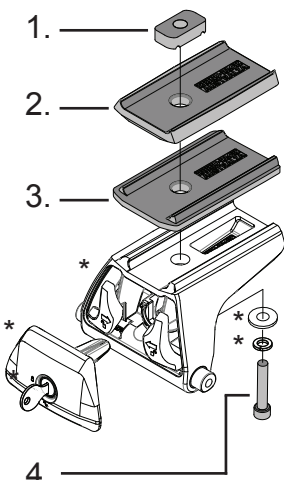
CONTROLLED

Item	Component Name	Qty	Part No.
1	M6 Channel Nut	2	N002
2	Quick Mount Leg HD Bar Spacer	2	M709
3	Quick Mount VA 5mm Spacer	2	M760
4	M6x30 Socket HD Cap Screw	2	B047
5	Instruction	1	R570

***Note:**
RLT600 Parts as separate.
Fix the Quick Mount Spacer to the Leg using the hardware in the leg kit. The bolts found in the spacer kit will replace the original in the leg kit.

Tools Required:
5mm Allen Key 

Issue: 02 Document No: R570



Note: Max Spacer height 30mm

Prepared: Kayle Everett




RHINO-RACK

QMHD10

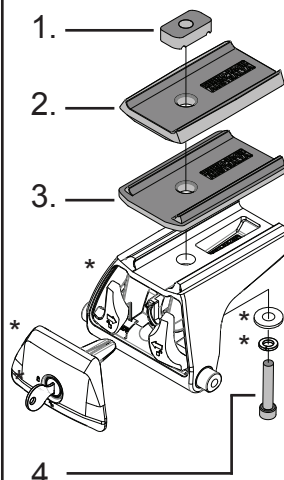
CONTROLLED

Item	Component Name	Qty	Part No.
1	M6 Channel Nut	2	N002
2	Quick Mount Leg HD Bar Spacer	2	M709
3	Quick Mount VA 5mm Spacer	2	M760
4	M6x30 Socket HD Cap Screw	2	B047
5	Instruction	1	R570

***Note:**
RLT600 Parts as separate.
Fix the Quick Mount Spacer to the Leg using the hardware in the leg kit. The bolts found in the spacer kit will replace the original in the leg kit.

Tools Required:
5mm Allen Key 

Issue: 02 Document No: R570



Note: Max Spacer height 30mm

Prepared: Kayle Everett




RHINO-RACK

QMHD10

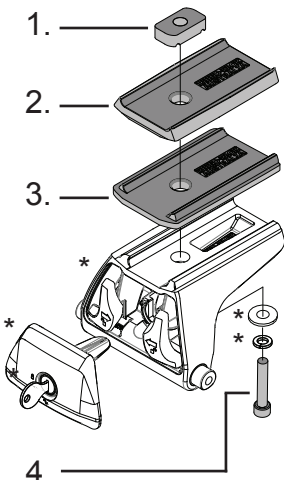
CONTROLLED

Item	Component Name	Qty	Part No.
1	M6 Channel Nut	2	N002
2	Quick Mount Leg HD Bar Spacer	2	M709
3	Quick Mount VA 5mm Spacer	2	M760
4	M6x30 Socket HD Cap Screw	2	B047
5	Instruction	1	R570

***Note:**
RLT600 Parts as separate.
Fix the Quick Mount Spacer to the Leg using the hardware in the leg kit. The bolts found in the spacer kit will replace the original in the leg kit.

Tools Required:
5mm Allen Key 

Issue: 02 Document No: R570



Note: Max Spacer height 30mm

Prepared: Kayle Everett




RHINO-RACK

QMHD10

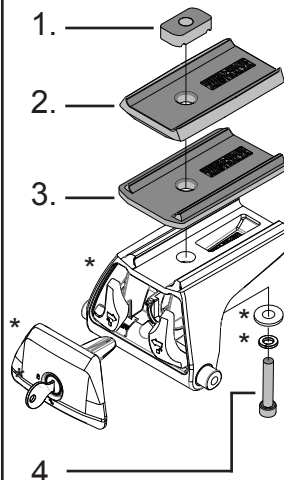
CONTROLLED

Item	Component Name	Qty	Part No.
1	M6 Channel Nut	2	N002
2	Quick Mount Leg HD Bar Spacer	2	M709
3	Quick Mount VA 5mm Spacer	2	M760
4	M6x30 Socket HD Cap Screw	2	B047
5	Instruction	1	R570

***Note:**
RLT600 Parts as separate.
Fix the Quick Mount Spacer to the Leg using the hardware in the leg kit. The bolts found in the spacer kit will replace the original in the leg kit.

Tools Required:
5mm Allen Key 

Issue: 02 Document No: R570



Note: Max Spacer height 30mm

Prepared: Kayle Everett




RHINO-RACK

QMHD10

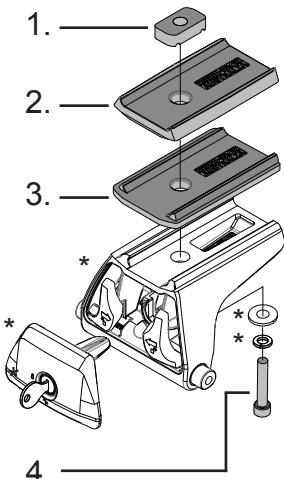
CONTROLLED

Item	Component Name	Qty	Part No.
1	M6 Channel Nut	2	N002
2	Quick Mount Leg HD Bar Spacer	2	M709
3	Quick Mount VA 5mm Spacer	2	M760
4	M6x30 Socket HD Cap Screw	2	B047
5	Instruction	1	R570

***Note:**
RLT600 Parts as separate.
Fix the Quick Mount Spacer to the Leg using the hardware in the leg kit. The bolts found in the spacer kit will replace the original in the leg kit.

Tools Required:
5mm Allen Key 

Issue: 02 Document No: R570



Note: Max Spacer height 30mm

Prepared: Kayle Everett




RHINO-RACK

QMHD10

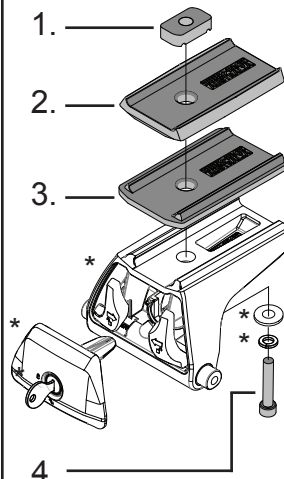
CONTROLLED

Item	Component Name	Qty	Part No.
1	M6 Channel Nut	2	N002
2	Quick Mount Leg HD Bar Spacer	2	M709
3	Quick Mount VA 5mm Spacer	2	M760
4	M6x30 Socket HD Cap Screw	2	B047
5	Instruction	1	R570

***Note:**
RLT600 Parts as separate.
Fix the Quick Mount Spacer to the Leg using the hardware in the leg kit. The bolts found in the spacer kit will replace the original in the leg kit.

Tools Required:
5mm Allen Key 

Issue: 02 Document No: R570



Note: Max Spacer height 30mm

Prepared: Kayle Everett