



RHINO-RACK

QMW10

CONTROLLED

Item	Component Name	Qty	Part No.
1	M6x20 Button Security Screw	2	B062
2	M6x25 Button Security Screw	2	B137
3	10mm Wedge for RLT600	2	M772
4	Instructions	1	R670

***Note:**
RLT600 Parts as separate

Tools Required:

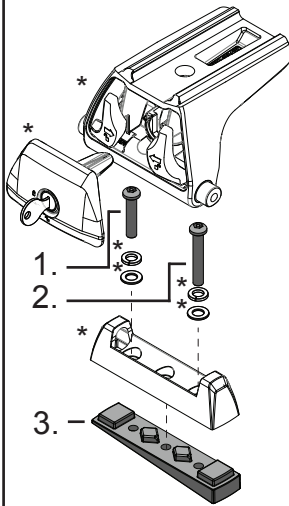
5mm Allen Key



Issue: 02

Document No: R670

Prepared: Kayle Everett



RHINO-RACK

QMW10

CONTROLLED

Item	Component Name	Qty	Part No.
1	M6x20 Button Security Screw	2	B062
2	M6x25 Button Security Screw	2	B137
3	10mm Wedge for RLT600	2	M772
4	Instructions	1	R670

***Note:**
RLT600 Parts as separate

Tools Required:

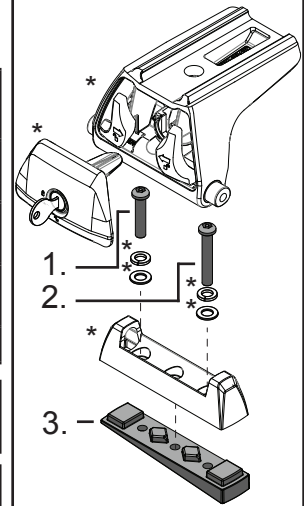
5mm Allen Key



Issue: 02

Document No: R670

Prepared: Kayle Everett



RHINO-RACK

QMW10

CONTROLLED

Item	Component Name	Qty	Part No.
1	M6x20 Button Security Screw	2	B062
2	M6x25 Button Security Screw	2	B137
3	10mm Wedge for RLT600	2	M772
4	Instructions	1	R670

***Note:**
RLT600 Parts as separate

Tools Required:

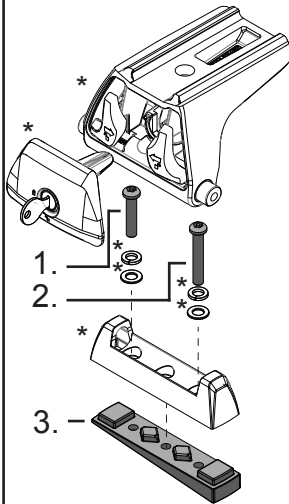
5mm Allen Key



Issue: 02

Document No: R670

Prepared: Kayle Everett



RHINO-RACK

QMW10

CONTROLLED

Item	Component Name	Qty	Part No.
1	M6x20 Button Security Screw	2	B062
2	M6x25 Button Security Screw	2	B137
3	10mm Wedge for RLT600	2	M772
4	Instructions	1	R670

***Note:**
RLT600 Parts as separate

Tools Required:

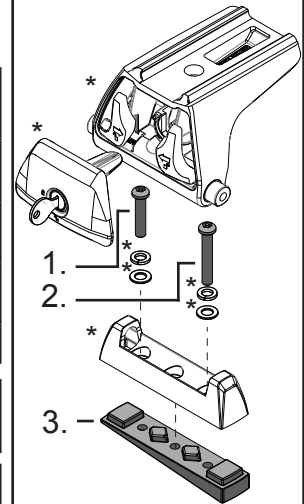
5mm Allen Key



Issue: 02

Document No: R670

Prepared: Kayle Everett



RHINO-RACK

QMW10

CONTROLLED

Item	Component Name	Qty	Part No.
1	M6x20 Button Security Screw	2	B062
2	M6x25 Button Security Screw	2	B137
3	10mm Wedge for RLT600	2	M772
4	Instructions	1	R670

***Note:**
RLT600 Parts as separate

Tools Required:

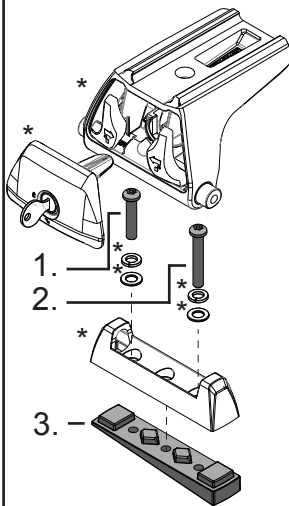
5mm Allen Key



Issue: 02

Document No: R670

Prepared: Kayle Everett



RHINO-RACK

QMW10

CONTROLLED

Item	Component Name	Qty	Part No.
1	M6x20 Button Security Screw	2	B062
2	M6x25 Button Security Screw	2	B137
3	10mm Wedge for RLT600	2	M772
4	Instructions	1	R670

***Note:**
RLT600 Parts as separate

Tools Required:

5mm Allen Key



Issue: 02

Document No: R670

Prepared: Kayle Everett

